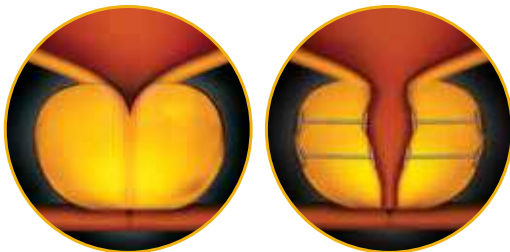


## What is UroLift®?

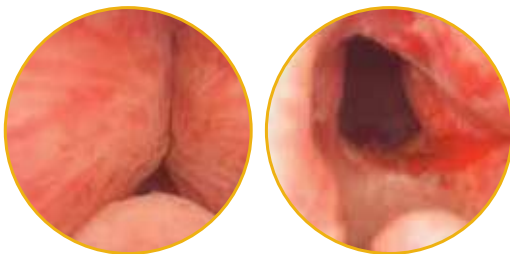
The UroLift® System is designed to treat lower urinary tract symptoms (LUTS) due to benign prostatic hyperplasia (BPH). It opens the urethra directly by retracting the obstructing prostatic lobes without cutting, heating or removing prostate tissue.



Pre-Procedure

Post-Procedure

## Clinical Highlights



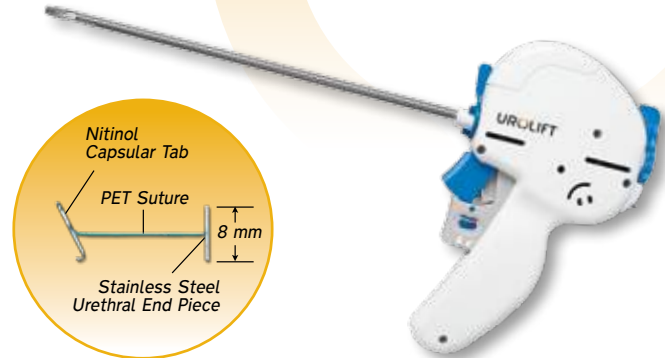
(Images courtesy of Dr. Peter Chin, Wollongong, NSW, Australia)

- Endoscopic results can be immediately confirmed post-procedure
- Patients experience rapid symptom relief as compared to other BPH surgeries<sup>1</sup>
- Sexual function is preserved<sup>1</sup>
- UroLift System treatment does not preclude the option for future UroLift, TURP, or laser procedures should one be indicated

*Most common adverse events reported include hematuria, dysuria, micturition urgency, pelvic pain, and urge incontinence. Most symptoms were mild to moderate in severity and resolved within two to four weeks after the procedure.*

<sup>1</sup> Roehrborn, J Urology 2013 LIFT Study

## UroLift® System: UL400



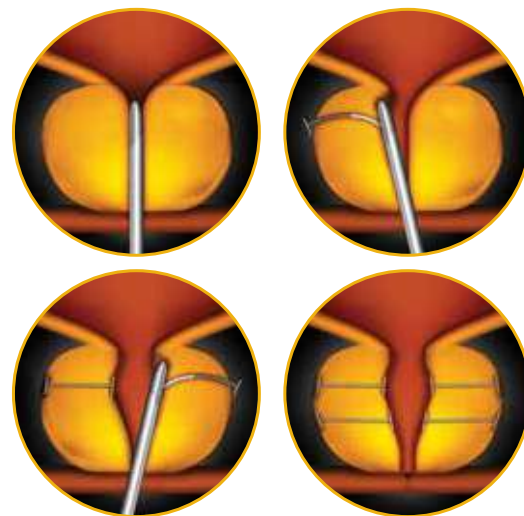
UroLift® Transprostatic Tissue Retractor

UroLift® Delivery Device

The UroLift Delivery Device is inserted transurethraly through a rigid sheath under cystoscopic visualization in order to reach the targeted area of obstruction.

The UroLift Retractor is deployed through a needle that comes out of the delivery device to retract the obstructing lobes.

Each UroLift Delivery Device contains one UroLift Retractor. Typically, 4-6 UroLift Retractors are placed into the prostate.



*Most common adverse events reported include hematuria, dysuria, micturition urgency, pelvic pain, and urge incontinence. Most symptoms were mild to moderate in severity and resolved within two to four weeks after the procedure.*

<sup>1</sup> Roehrborn, J Urology 2013 LIFT Study

## Ordering Information

Description	Catalog Number	Unit of Measure	Number of Units/Box
UroLift® System	UL400-4	Each*	4

\*Must be ordered in multiples of 4

### Ancillary Procedure Kit



**2.9 mm, 0°, 36 cm Telescope**  
(UL-SCOPE)



**20F Sheath**  
(UL-SHEATH)



**Visual Obturator**  
(UL-VO)

### Ancillary Retrieval Kit



**4 mm, 30°, 30 cm Telescope**  
(UL-SCOPE4)



**Bridge with One Working Channel**  
(UL-WBRIDGE)



**Endoscopic Grasper**  
(UL-GRASP)

### Other



**Cleaning and Storage Basket**  
(UL-TRAY)